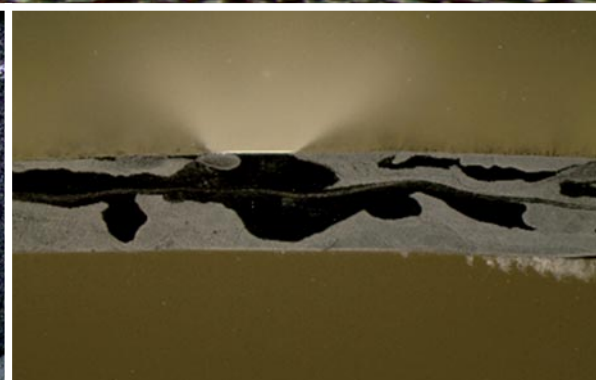
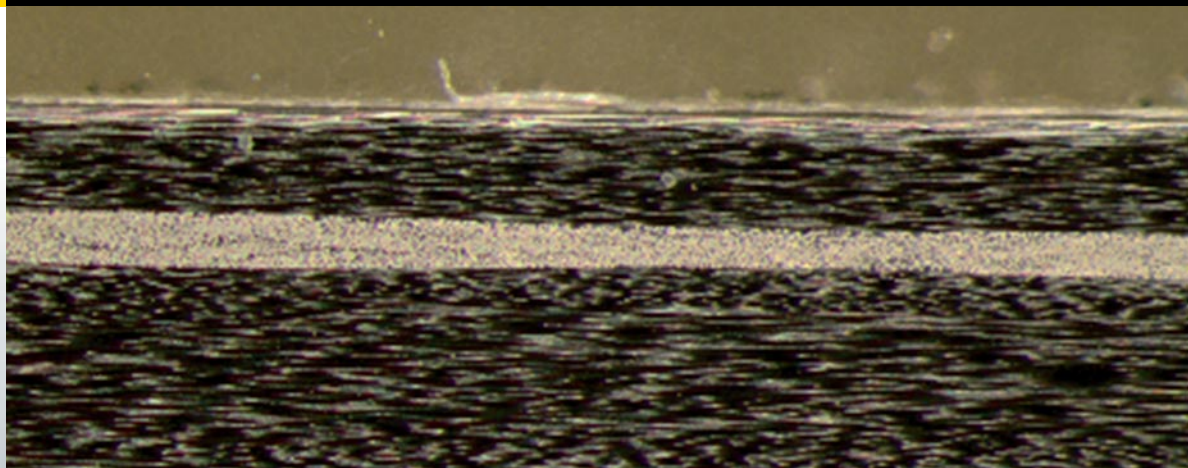


NIKK

NERLANDS INSTITUUT
VOOR KUNSTSTOFKENNIS



Chemelot Campus 007.1.015
Urmonderbaan 22
6167 RD Geleen
The Netherlands

Postbus 18
6160 MD Geleen
The Netherlands

T +31 (0)46 763 04 05
E info@nikk.nu

Case History

Subject:
CRP profiles

Target:
Investigation of the structure of carbon reinforced profiles in comparison of two different productions

Investigations:
light microscopy

Description:
A production is engaged in production of carbon reinforced and glass fibre reinforced profiles in different shapes: round and rectangular.

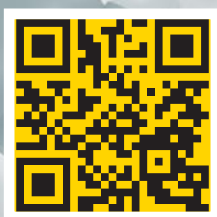
The quality of the products should be comparable to productions in the past and with competitors.

The aim of the investigation is to compare the different qualities of the profiles produced with reference profiles.

Evaluation:
The produced profiles are not fully uniform produced. The distribution of the filaments is not equal over the whole wall thickness. Furthermore several air bubbles could be observed. In some cases there also small cracks in the structure could be observed.

The reference profile has a more uniform distribution of the fibers and has less air bubbles in side.

Recommendation:
The production parameters should be modified.



WWW.NIKK.NU